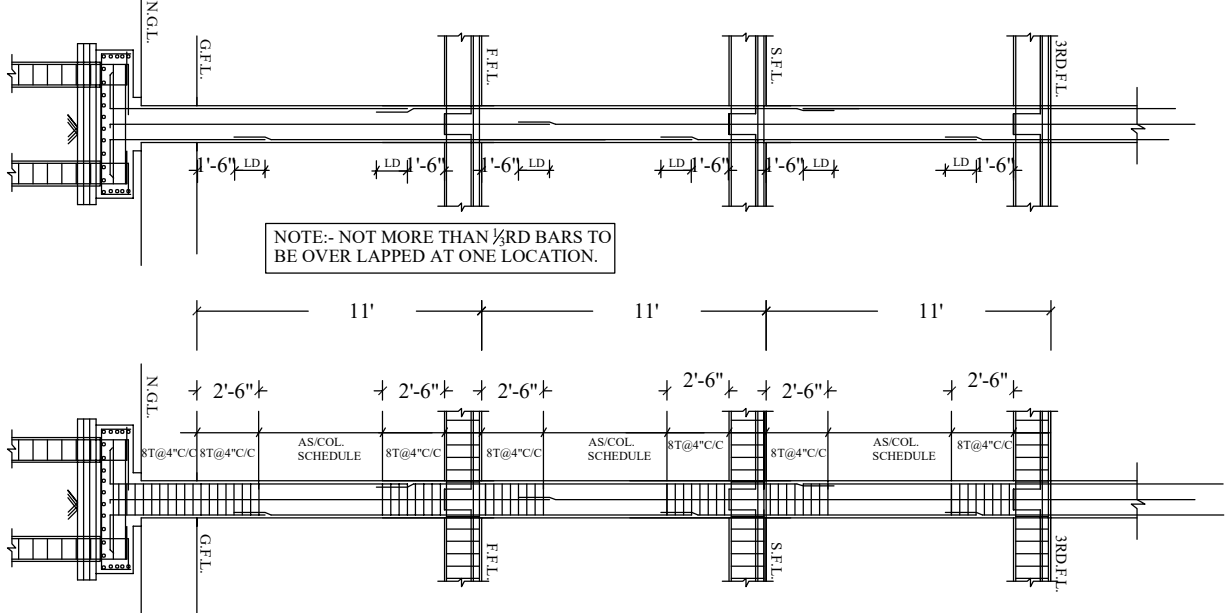
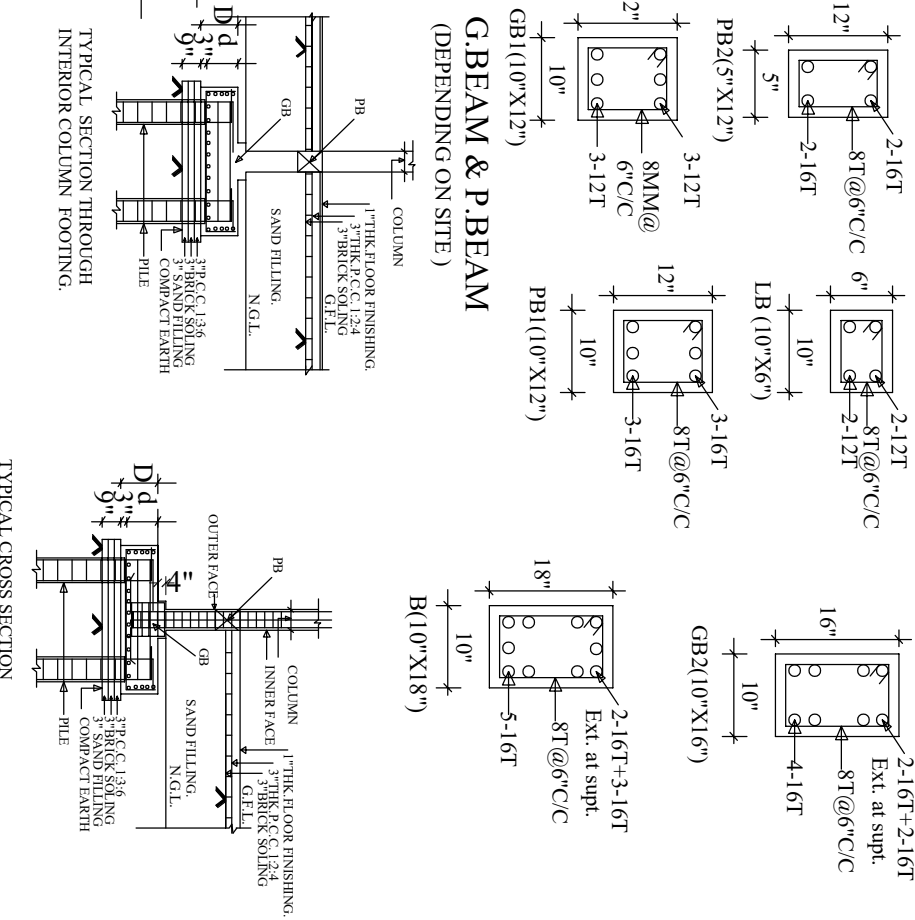


NOTES:-

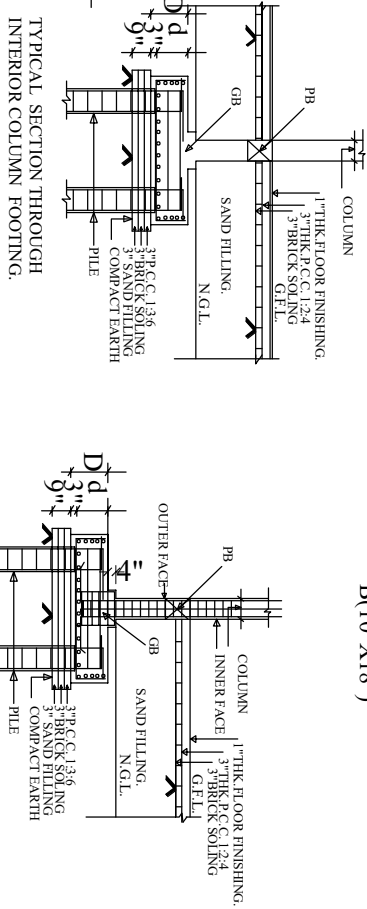
1. ALL DIMENSIONS SHALL BE COMPARED WITH ARCHITECTURAL DRAWINGS AND DISCREPANCY IF ANY SHALL BE GOT RECONCILED BEFORE EXECUTION AT SITE.
2. FIGURED DIMENSION SHALL ONLY BE FOLLOWED.
3. ALL DIMENSIONS ARE IN FEET - INCHES UNLESS OTHERWISE SPECIFIED.
4. MIX. OF CONCRETE SHALL BE M-20.
5. CLEAR COVER TO MAIN REIN. FOR R.C.C. MEMBERS SHALL BE AS UNDER:
COLUMNS - 40MM, BEAMS - 25MM, SLABS - 20MM.
6. ALL REINFORCEMENT SHALL BE OF 500 SD(TATA/SAIL/JINDAL/VIZAG)
7. FOR DIMENSIONS REF. ARCHITECTURAL DRAWING ONLY.
8. LD:- 50 BAR DIA (FOR TENSION), 25 BAR DIA (FOR COMPRESSION)



NOTE:- NOT MORE THAN 1/3RD BARS TO BE OVER LAPPED AT ONE LOCATION.



G.BEAM & P.BEAM
(DEPENDING ON SITE)



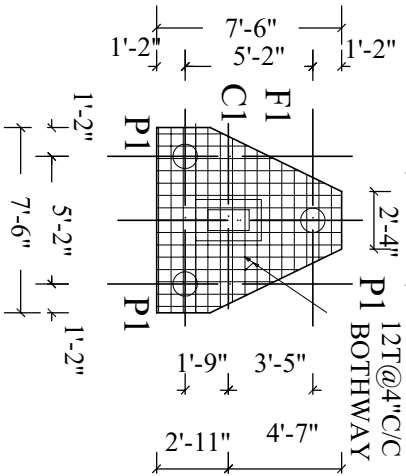
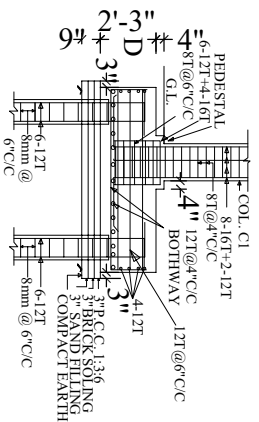
S. NO.	TYPE	FOOTING SIZE:			REINFORCEMENT:			PILE SIZE:			REINFORCEMENT:		
		L	B	D	d	LONG. BARS	TRANS. BARS	TYP DIA	DEPTH	BUCK.	LONG.	RING	
1	F1	7'-6"	2'-4"	27"	24"	12T @4"C/C	12T @4"C/C	P1 16"	20'-0"	2	6-12T	8mm @6"C/C	
2	F2	7'-6"	2'-4"	27"	24"	12T @3"C/C	12T @3"C/C	P2 16"	22'-0"	2	6-12T	8mm @6"C/C	
3	F3	7'-6"	27"	24"	24"	12T @3"C/C	12T @3"C/C	P3 16"	24'-0"	2	6-12T	8mm @6"C/C	

DESIRABLE LOCATION OF OVERLAP FOR COLUMN BARS. ARRANGEMENT OF STIRRUPS IN COLUMN. NOTE:- ADD 3'-4" EXTRA DEPTH IN ALL PILE BORE FOR CAP CASTING UNDER GROUND.

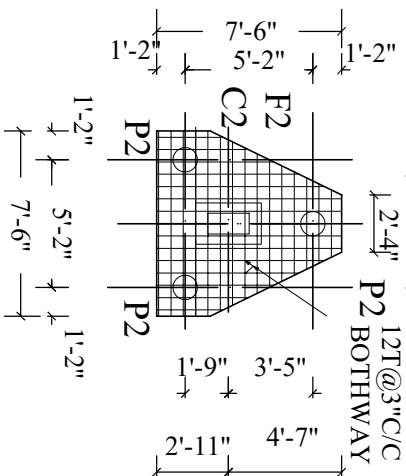
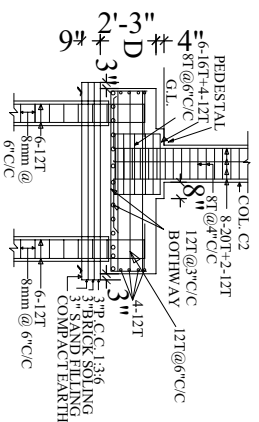
TITLE	FOUNDATION DET.-1,(B-1,PH-1)
PROJECT	PROPOSED D.A.V. PUBLIC SCHOOL, ARWAL AT AMRA, ARWAL, BIHAR.
archgroup	architects, engineers, interior designers, 507(A), VASTU VIHAR, PH-6, AIIMS-1, NH-139, NAUBATPUR ROAD, BHUSAULA, PATNA, PIN-801505, Mob:-9973550049

S.NO.	DATE	REVISIONS	DATE

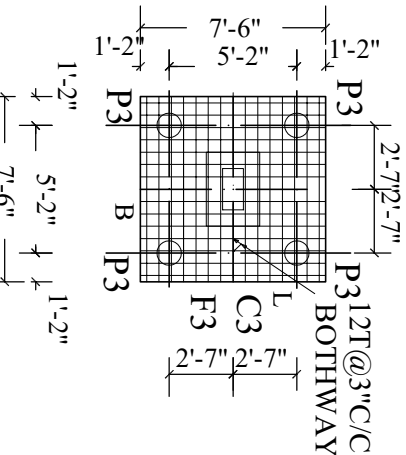
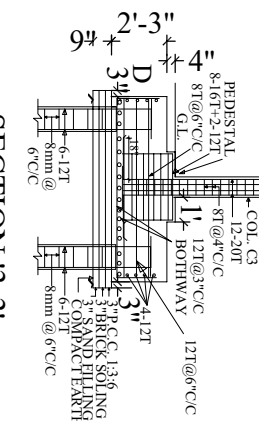
SHEET. NO.- S3
DATE
FEB-24



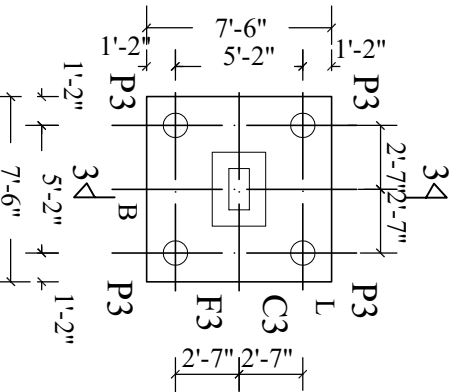
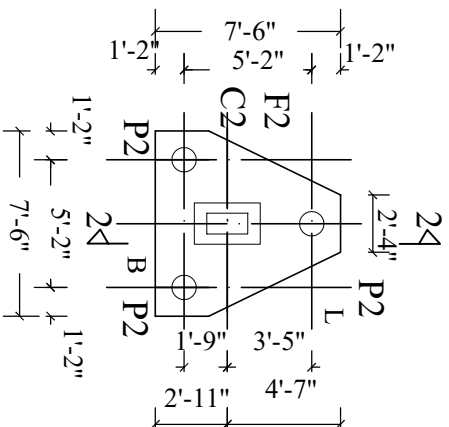
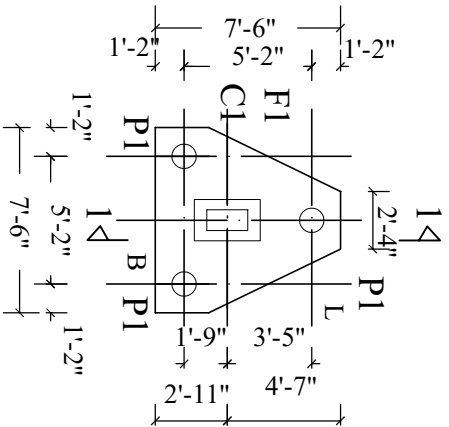
FOOTING F1



FOOTING F2



FOOTING F3



FOOTING F1 (7'-6"X7'-6"/2'-4")

FOOTING F2 (7'-6"X7'-6"/2'-4")

FOOTING F3(7'-6"X7'-6")

PROJECT

PROPOSED D.A.V. PUBLIC SCHOOL, ARWAL AT AMRA, ARWAL, BIHAR.

DRG. NO.-S4

TITLE
FOUNDATION DETAILS-2
(BLOCK-1,PH-1)

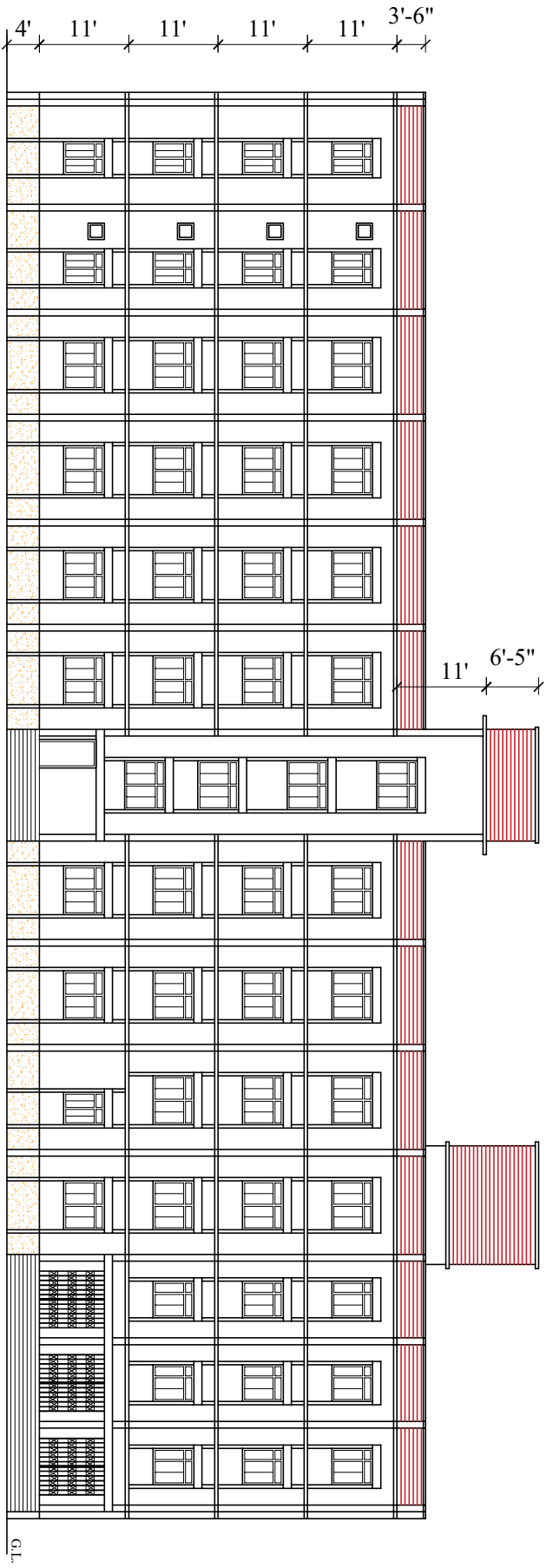
DATE

FEB.-24

archgroup

architects, engineers,
interior designers,

507(A), VASTU VIHAR, PH-6,
AIIMS-1, NH-139, NAUBATPUR
ROAD, BHUSAULA, PATNA,
PIN-801505, Mob:-9973550049



PROJECT

**PROPOSED D.A.V. PUBLIC SCHOOL, ARWAL AT AMRA,
ARWAL, BIHAR.**

DRG. NO.-07

DATE
FEB.-24

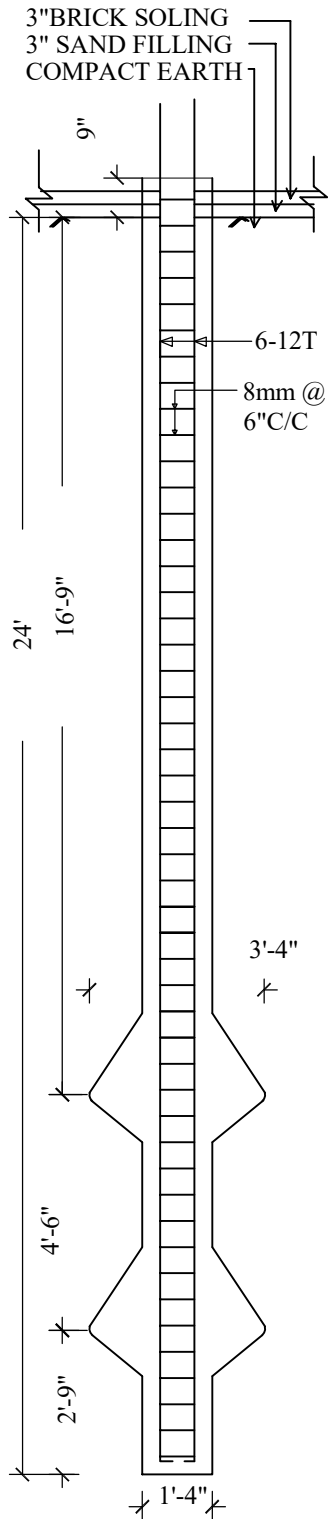


TITLE
FRONT ELEVATION
(BLOCK-1, PH-1)

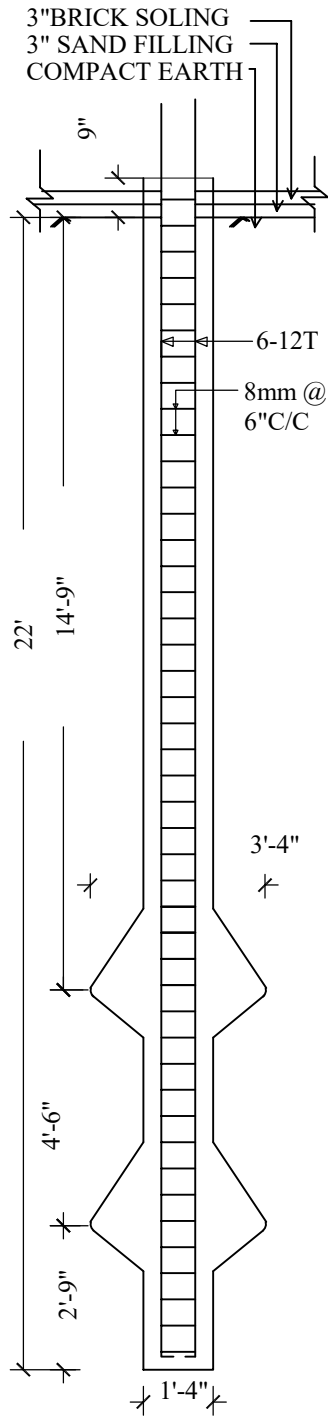
archgroup

architects, engineers,
interior designers,

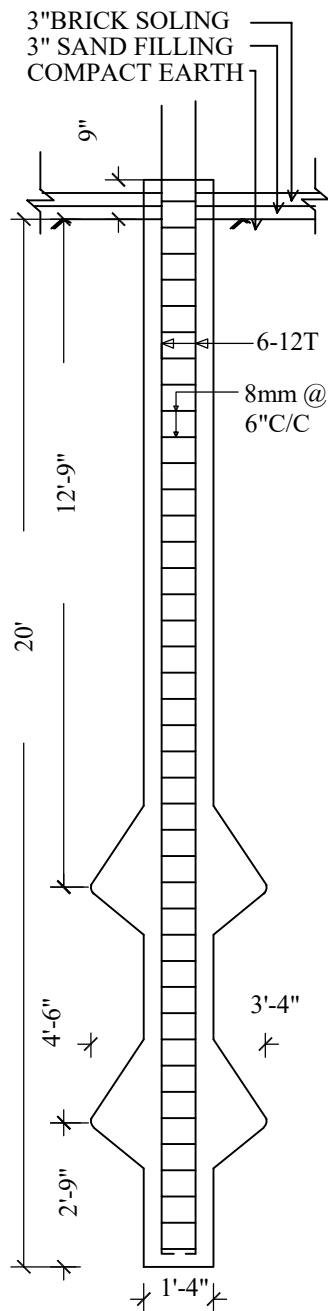
507(A), VASTU VIHAR, PH-6,
AIMS-1, NH-139, NAUBATPUR
ROAD, BHUSAUIA, PATNA,
PIN-801505, Mob:-9973550049



**P3 (16" DIA)
PILE DETAILS**



**P2 (16" DIA)
PILE DETAILS**



**P1 (16" DIA)
PILE DETAILS**

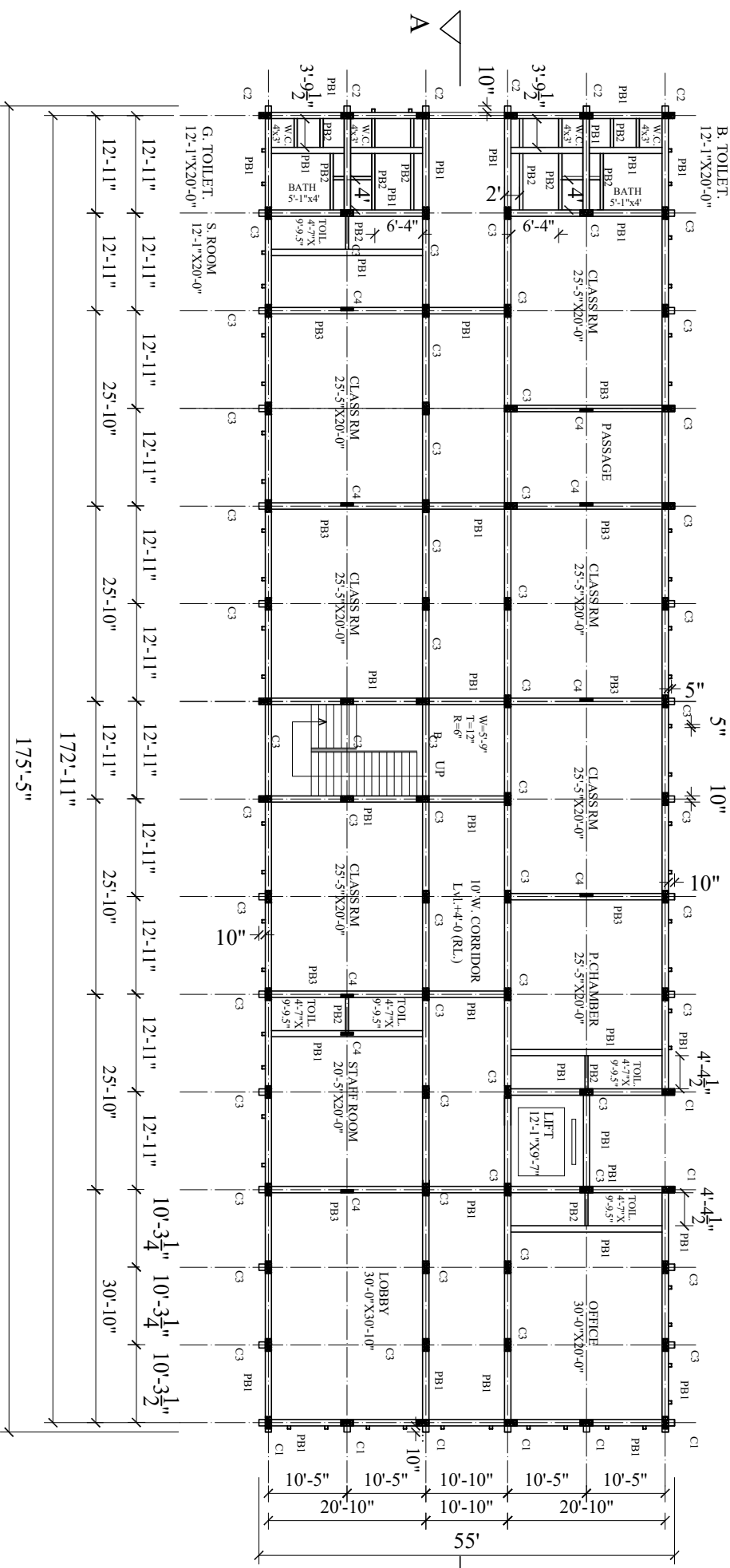
S.NO.	DATE	REVISIONS
SHEET. NO.-S5		DATE FEB.-24
TITLE PILE DETAILS,(B-1,PH-I)		
PROJECT PROPOSED D.A.V. PUBLIC SCHOOL, ARWAL AT AMRA, ARWAL, BIHAR.		
archgroup architects, engineers, interior designers, 507(A),VASTU VIHAR, PH-6, AIIMS-1,NH-139,NAUBATPUR ROAD,BHUSAULA,PATNA, PIN-801505, Mob:-9973550049		

NOTE: COLUMN C4 WILL START FROM
FLOOR LEVEL BEAM AS PER DRAWING



8T@6\"/>

B. TOILET.
12'-1\"/>



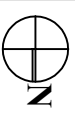
PROJECT

**PROPOSED D.A.V. PUBLIC SCHOOL, ARWAL AT AMRA,
ARWAL, BIHAR.**

DRG. NO.-S2

DATE

FEB.-24

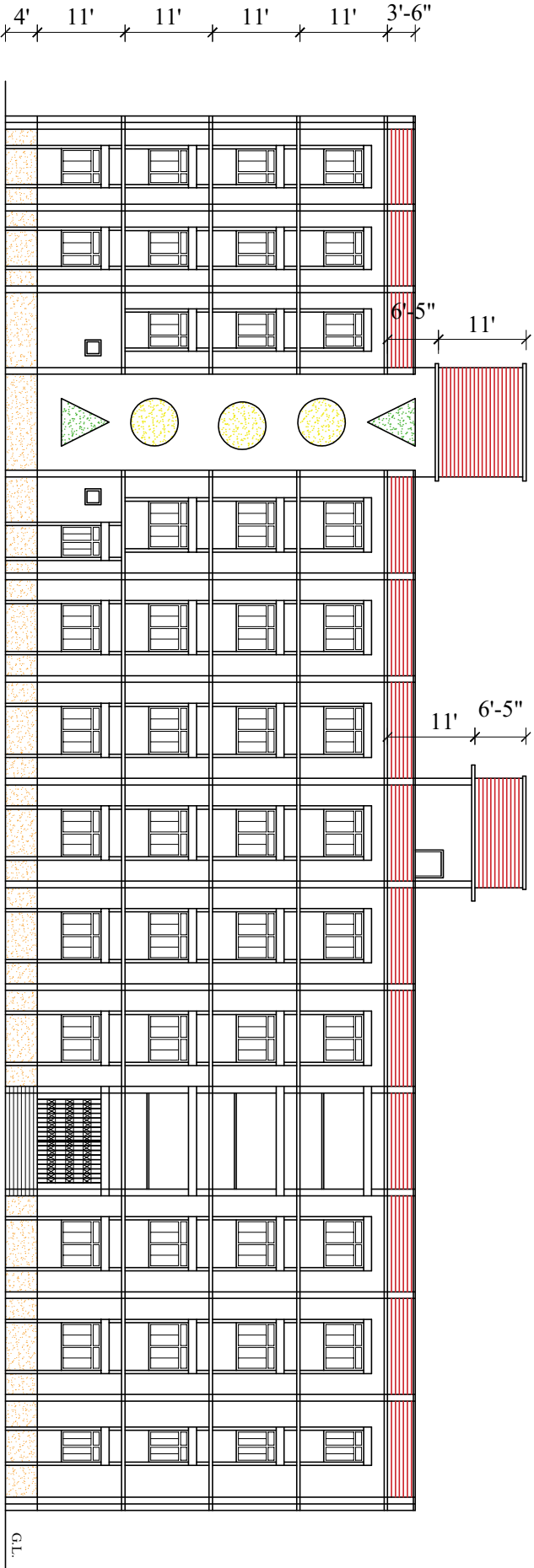


archgroup

architects, engineers,
interior designers,

507(A), VASTU VIHAR, PH-6,
AIIMS-1, NH-139, NAUBATPUR
ROAD, BHUSAULA, PATNA,
PIN-801505, Mob.: 9973550049

TITLE
PLINTH BEAM DET.
(BLOCK-1, PH-1)



G.L.

PROJECT

**PROPOSED D.A.V. PUBLIC SCHOOL, ARWAL AT AMRA,
ARWAL, BIHAR.**

DRG. NO.-08

DATE

FEB.-24



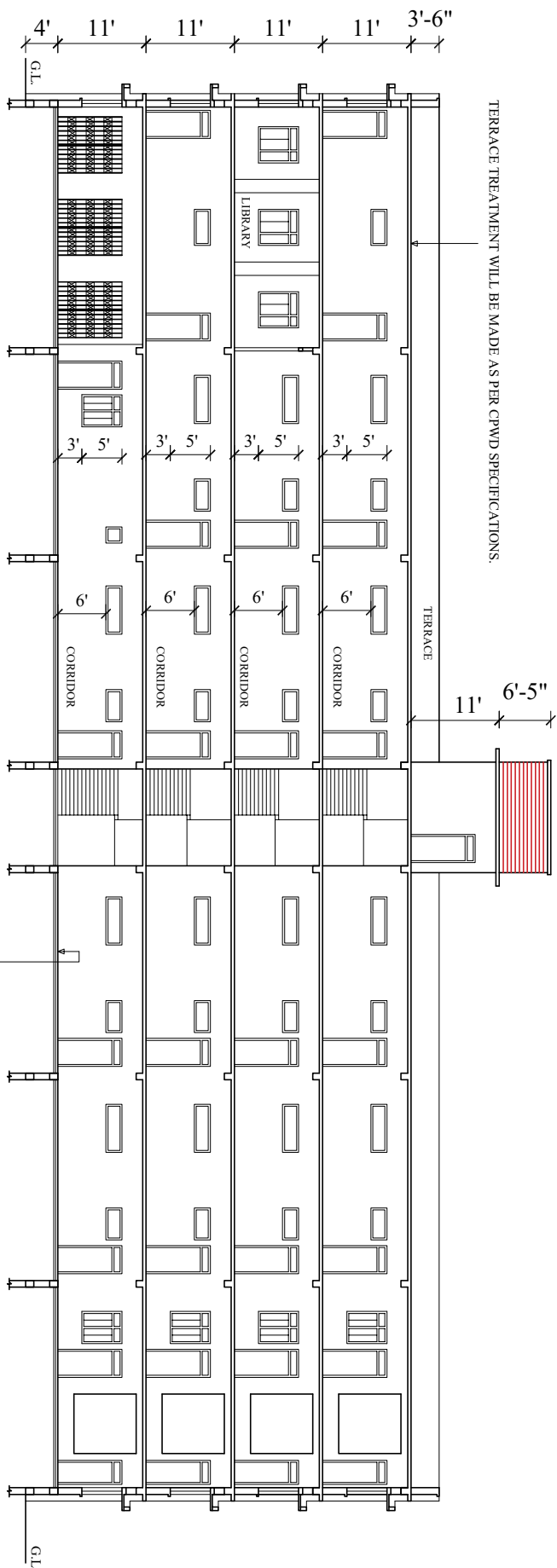
archygroup

architects, engineers,
interior designers,

507(A), VASTU VIHAR, PH-6,
AIIMS-1, NH-139, NAUBATPUR
ROAD, BHUSAUL, PATNA,
PIN-801505, Mob:-9973550049

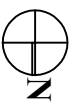
TITLE
REAR ELEVATION

(BLOCK-1, PH-1)



MARBLE FLOORING OVER 3" P.C.C. 1:2:4 OVER B. FLAT
 SOLING OVER SAND FILLING OVER COMPACT EARTH

PROJECT
**PROPOSED D.A.V. PUBLIC SCHOOL, ARWAL AT AMRA,
 ARWAL, BIHAR.**

DRG. NO.-09	DATE FEB.-24	
TITLE SECTION 'A-A' (BLOCK-1, PH-1)		
archgroup architects, engineers, interior designers, 507(A), VASTU VIHAR, PH-6, AIIMS-1, NH-139, NAUBATPUR ROAD, BHUSAULA, PATNA, PIN-801505, Mob.: 9973550049		

DOORS & WINDOWS DETAIL

1. GROUND, 1ST, 2ND, 3RD FLOOR & MUMTY

TYP.	SIZE	S.L.	L.L.	DESCRIPTIONS
D	3'-6"X8'-0"	-	8'-0"	WOODEN DOOR WITH GLAZED VENTILATOR
D1	3'-0"X8'-0"	-	" "	" " " " " "
D3	3'-6"X7'-0"	-	7'-0"	WOODEN DOOR
D2	2'-6"X7'-0"	-	" "	ALUMINIUM FRAMED COMPOSITE PANEL DOOR
CD	6'-11"x8'-0"	-	8'-0"	STEEL COLLAPSIBLE DOOR
CD1	10'-5"x8'-0"	-	" "	" " " " " "
W	6'-0"x5'-0"	3'-0"	8'-0"	ALUMINIUM SLIDING GLAZED WINDOW WITH VENTILATOR
W1	4'-6"X5'-0"	" "	" "	" " " " " "
W2	4'-0"X5'-0"	" "	" "	" " " " " "
V	6'-0"X2'-0"	6'-0"	8'-0"	M.S. GRILL VENTILATOR
V1	4'-6"X2'-0"	" "	" "	" " " "
V2	4'-0"X2'-0"	" "	" "	" " " "
V3	2'-0"X2'-0"	" "	" "	STEEL GLAZED VENTILATOR
G1	10'-0"X5'-0"	3'-0"	8'-0"	M.S. GRILL
G2	12'-1"X5'-0"	" "	" "	" "

BRIEF SPECIFICATIONS

1. STRUCTURE- FRAMED STRUCTURE EARTH QUAKE PROOF WITH ISOLATED & PILE FOUNDATION .
2. CONCRETE MIX -M20 (1 CEMENT, 1.5 SAND, 3 STONE CHIPS.)
3. FLOOR HEIGHT-11'-0"
4. PLINTH HEIGHT- +4'-0" FROM ROAD LEVEL.
5. TERRACE, TOILETS WILL BE MADE WATER PROOF WITH CONCRETE FLOOR PUNNING AND W.P. CHEMICAL.
6. PLINTH PROTECTION-2'-6" HT. 3'-0" WIDE ALL ROUND THE BUILDING USING 125 MM THK. RETAINING BRICK WALL IN C.M. 1:4 WITH CONNECTING AT EACH COLUMN WITH 250 MM THK. B. WALL IN CM 1:6 OVER PROPER FOUNDATION OF 3" P.C.C. 1:3:6 OVER 3" BRICK FLAT SOLING OVER 3" SAND FILLING OVER COMPACT EARTH AND DEPTH AS/SITE WITH TOP 50MM THK. P.C.C. 1:3:6 OVER 75 MM BED OF DRY BRICK BALLAST RAMMED, CONSOLIDATED AND GROUTED WITH FINE SAND OVER SAND FILLING INCLUDING TOP SMOOTH FINISH IN COLORED CEMENT PUNNING AS PER C.P.W.D SPECIFICATION.
7. BRICK WORK - 10" THK. IN C.M 1:6, 5" THK. IN C.M. 1:4.
8. PLASTERING - ON BRICK WALL C.M 1:6, CEILING & R.C.C. STRUCTURE-1:4.
9. FLOORING - CLASS ROOM WITH POLISHED KOTA STONE; LABS WITH STORE AND TEACHER ROOM, LIBRARY, PRINCIPAL CHAMBER, STAFF ROOM, OFFICE -VITRIFIED FLOOR; CHEMISTRY LAB, STORE, T. ROOM-ACID PROOF TILES; ENTRANCE STEPS- POLISHED KOTA STONE; COMMON AREA, STAIR -MARBLE; TOILET -MARBLE/CERAMIC FLOOR TILES. SKIRTING - 6" IN HT. OF RESPECTIVE STONE FLOOR
10. WALL TILES-4'-0" HEIGHT IN VERANDAH BOTH SIDES, STAIR CASE FULLY; 5'-0" HEIGHT IN W.C, TOILET ROOM, DRINKING FOUNTAIN & 7'-0" HEIGHT IN BATH, WITH CERAMIC WALL TILES. LABS, T. ROOM, STORE, SICK ROOMS, LIBRARY, PRINCIPAL ROOM, STAFF ROOM, OFFICE- 3'-0" HEIGHT WITH CERAMIC WALL TILES.
11. DOOR- 30MM THK. KLIN SEASONED AND CHEMICALLY TREATED FLUSH DOORS OF GREEN CENTURY. W.C. & BATH DOORS- ALUMINIUM FRAMED COMPOSITE PANEL DOORS.
12. DOOR CHAUKHATE- 4"X2.5" THK. SAL WOOD OR HOLLOW SECTION PRESSED SHEET FRAME 18 GAUGE OR T-IRON FRAME ISNT 50.
13. WINDOWS-ALUMINIUM SLIDING FRAMED WITH CLEAR 4MM THK. GLASS.
14. PAINTING-EXTERNAL SURFACE -PREMIUM ACRYLIC SMOOTH WITH SILICONE ADDITIVES OVER PRIMER INTERIOR SURFACE:- COMMON AREA, CLASS ROOM, STAIR, ETC. COMPLETE - 1ST QUALITY ACRYLIC DISTEMPER HAVING VOC LESS THAN 50 AND PRIMER OVER 2 MM THICK PUTTY, CLASS ROOMS DADO 4' HT. - DELUXE MULTI SURFACE PAINT WITH SPECIAL PRIMER. DOORS, WINDOWS- ENAMEL PAINT WITH PRIMER
15. PLUMBING & ELECTRICAL WORK WILL BE DONE AS PER DRAWING AND SITE...
16. STANDARD SPECIFICATIONS WILL BE FOLLOWED AND NO EXTRA PAYMENT TO BE GIVEN FOR MINOR CHANGES AS/SITE CONDITION.
17. GRILL- WINDOWS, VENTILATORS & CORRIDOR OPENINGS ARE PROVIDED WITH 10X10 MM. M.S. SQUARE/ FLAT STEEL GRILLS.
18. COLLAPSIBLE GATE- AT GROUND FLOOR COLLAPSIBLE GATES OF 20X10X2 MM VERTICAL CHANNELS 20X5 MM DIAGONALS WITH TOP AND BOTTOM RAIL OF T-IRON 40X40X6 MM WITH 40 MM DIA STEEL PULLEY ARE PROVIDED.
19. TERRACE AND CORRIDOR WATER WILL BE DRAINED WITH 110 MM DIA P.V.C. PIPES TO GROUND LEVEL.
20. STAINLESS STEEL- STAIR RAILING IN 3'-0" HT. WILL BE OF ISI MARKED STAINLESS STEEL GRADE 304/316.

PROJECT

**PROPOSED D.A.V. PUBLIC SCHOOL,
ARWAL AT AMRA, ARWAL, BIHAR.**

DRG. NO-10

TITLE
**DOORS, WINDOWS DETAIL &
SPECIFICATIONS(B-1,PH-I)**

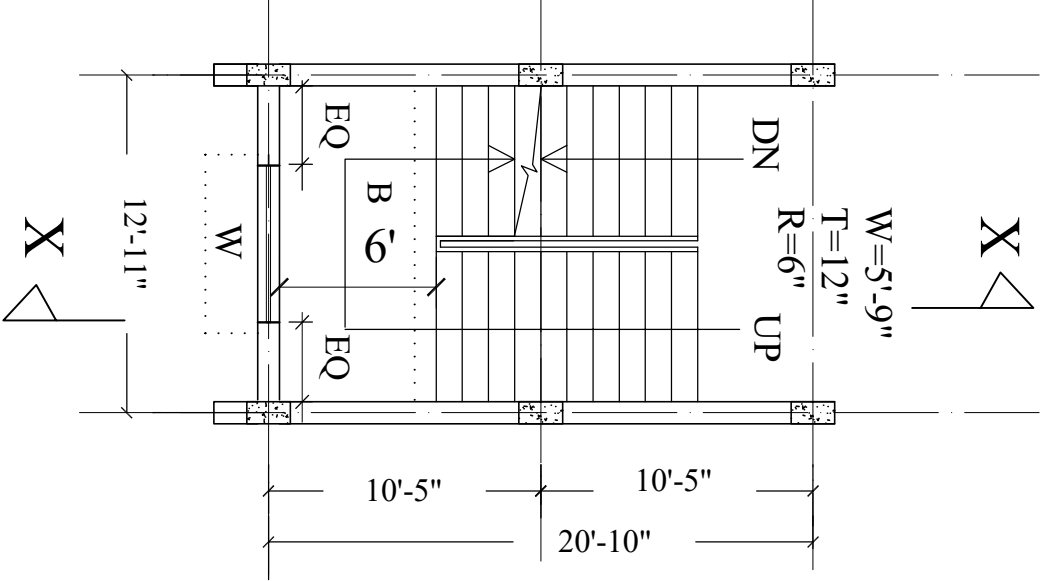
DATE

FEB.-24

archgroup

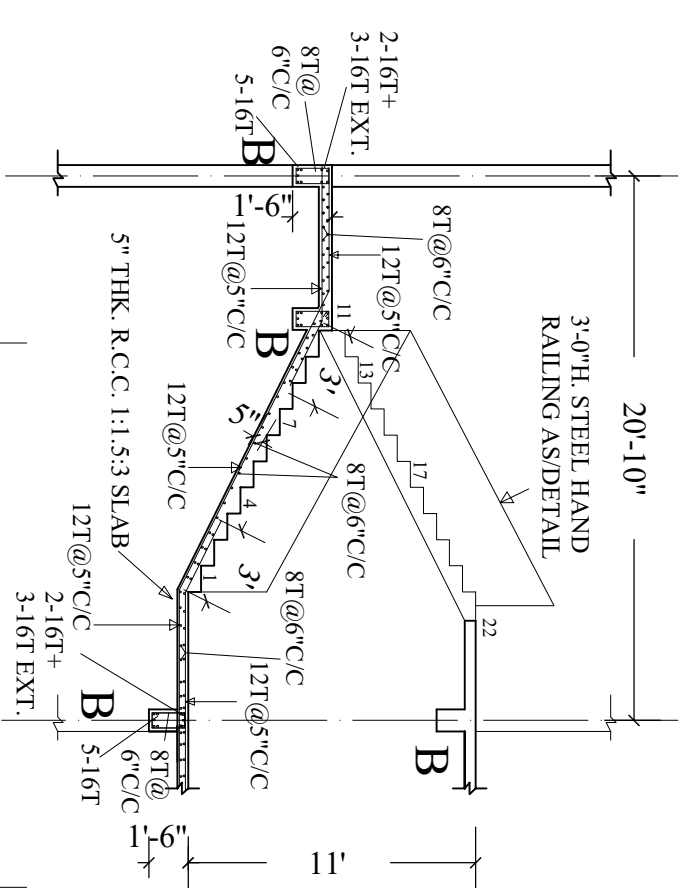
architects, engineers,
interior designers,

507(A), VASTU VIHAR, PH-6,
AIIMS-1, NH-139, NAUBATPUR
ROAD, BHUSAULA, PATNA,
PIN-801505, Mob:-9973550049

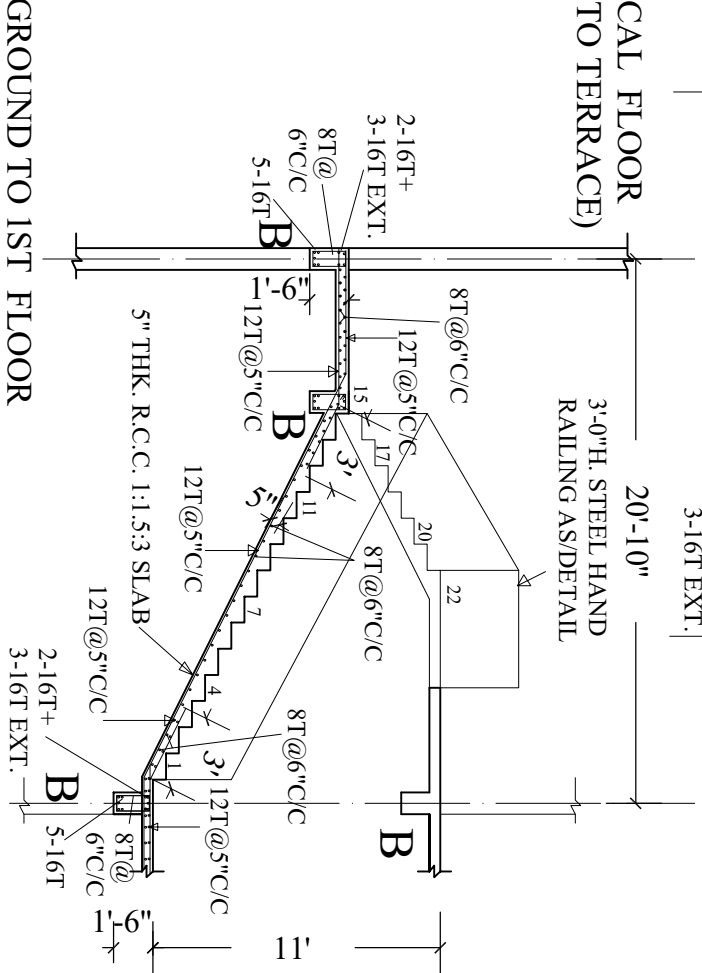


TYPICAL FLOOR

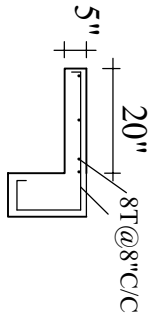
SLAB THICK.-5"
REINFORCEMENT DETAILS OF STAIR



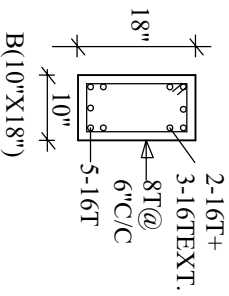
TYPICAL FLOOR
(1ST TO TERRACE)



GROUND TO 1ST FLOOR
SECTION 'X-X'



CHAJJA DETAIL



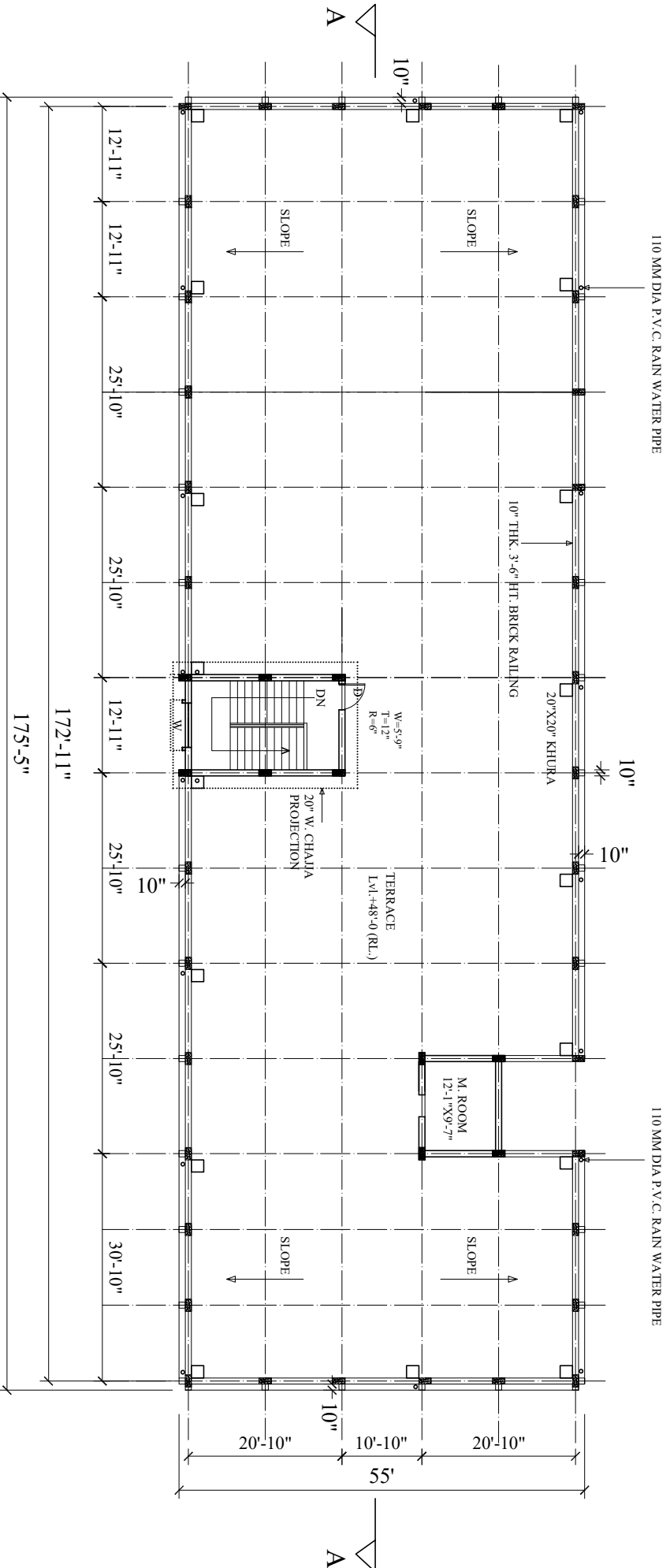
S.NO.	DATE	REVISIONS
SHEET NO.- S7	DATE	FEB.-24

TITLE
STAIR DETAILS.(B-1,PH-I)
PROJECT
PROPOSED D.A.V. PUBLIC SCHOOL, ARWAL AT AMRA, ARWAL, BIHAR.

archgroup

architects, engineers,
interior designers,
507(A), VASTU VIHAR, PH-6,
AIIMS-1, NH-139, NAUBATPUR
ROAD, BHUSA ULA, PATNA,
PIN-801505, Mob.-9973550049

- NOTE:-1. TERRACE TREATMENT WILL BE MADE AS PER CPWD SPECIFICATIONS.
 2. 110 MM DIA P.V.C. RAIN W. PIPE LINES WILL BE FIXED FROM TERRACE TO GROUND.
 3. 75 MM DIA P.V.C. DRAINAGE PIPE LINES WILL BE FIXED CONNECTING ROOMS TO GROUND.



MUMTY & WATER TANK +LIFT AREA = 309.38X2+156.07=774.83 SFT

PROJECT

**PROPOSED D.A.V. PUBLIC SCHOOL, ARWAL AT AMRA,
 ARWAL, BIHAR.**

DRG. NO.-06

DATE

FEB.-24



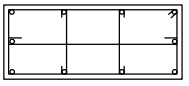
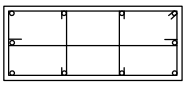
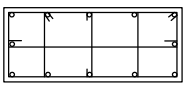
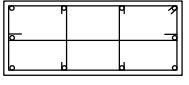
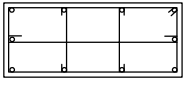
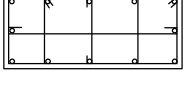
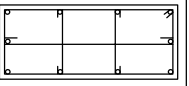
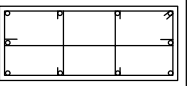
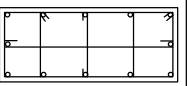
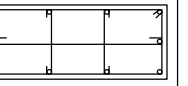
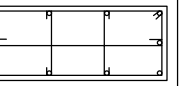
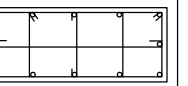
archygroup

architects, engineers,
 interior designers,

507(A), VASTU VIHAR, PH-6,
 AIIMS-1, NH-139, NAUBATPUR
 ROAD, BHUSAULA, PATNA,
 PIN-801505, Mob:-9973550049

TITLE
TERRACE FLOOR PLAN
 (BLOCK-1, PH-1)

COLUMN SCHEDULE

COL. MARK.	C1	C2	C3	COL. MARK.	COL. CONC.	C1	C2	C3
COL. CONC.	M-20	M-20	M-20	COL. CONC.		M-20	M-20	M-20
FOUNDATION TO G.F.ROOF				3RD.F.LEVEL TO 3RD.F.ROOF				
PEDESTAL SIZE	18"X28"	26"X36"	34"X44"					
PEDEST. STEEL	6-12T+4-16T	4-12T+6-16T	8-16T+2-12T					
PEDEST. STIR.	8T@6"C/C	8T@6"C/C	8T@6"C/C					
COL. SIZE.	10"X20"	10"X20"	10"X20"	COL. SIZE.		10"X20"	10"X20"	10"X20"
COL. STIRRUPS.	8T@6"C/C	8T@6"C/C	8T@6"C/C	COL. STIRRUPS.		8T@6"C/C	8T@6"C/C	8T@6"C/C
COL. REINF.	8-16T+2-12T	8-20T+2-12T	12-20T	COL. REINF.		8-16T+2-12T	8-16T+2-12T	12-16T
F.F.LEVEL TO F.F.ROOF								
COL. SIZE.	10"X20"	10"X20"	10"X20"					
COL. STIRRUPS.	8T@6"C/C	8T@6"C/C	8T@6"C/C					
COL. REINF.	8-16T+2-12T	8-20T+2-12T	10-20T+2-16T					
S.F.LEVEL TO S.F. ROOF								
COL. SIZE.	10"X20"	10"X20"	10"X20"					
COL. STIRRUPS.	8T@6"C/C	8T@6"C/C	8T@6"C/C					
COL. REINF.	8-16T+2-12T	4-20T+4-16T+2-12T	8-20T+4-16T					

PROJECT

**PROPOSED D.A.V. PUBLIC SCHOOL, ARWAL AT AMRA,
ARWAL, BIHAR.**

SHEET. NO.-S6	DATE
	FEB.-24

TITLE

COLUMN DETAIL

(BLOCK-1, P-1)

archgroup
architects, engineers,
interior designers,
507(A), VASTU VIHAR, PH-6,
AIIMS-1, NH-139, NAUBATPUR
ROAD, BHUSAULA, PATNA,
PIN-801505, Mob:-9973550049